

# *The current mobility situation in Klaipėda City*

Indrė Butenienė

Klaipėda City Municipality Administration

# Klaipėda City Strategic Development Plan 2013-2020

- Priority of City Development: „Sustainable urban development“
- Strategic goal: Applying sustainable mobility principles in the city's transport system



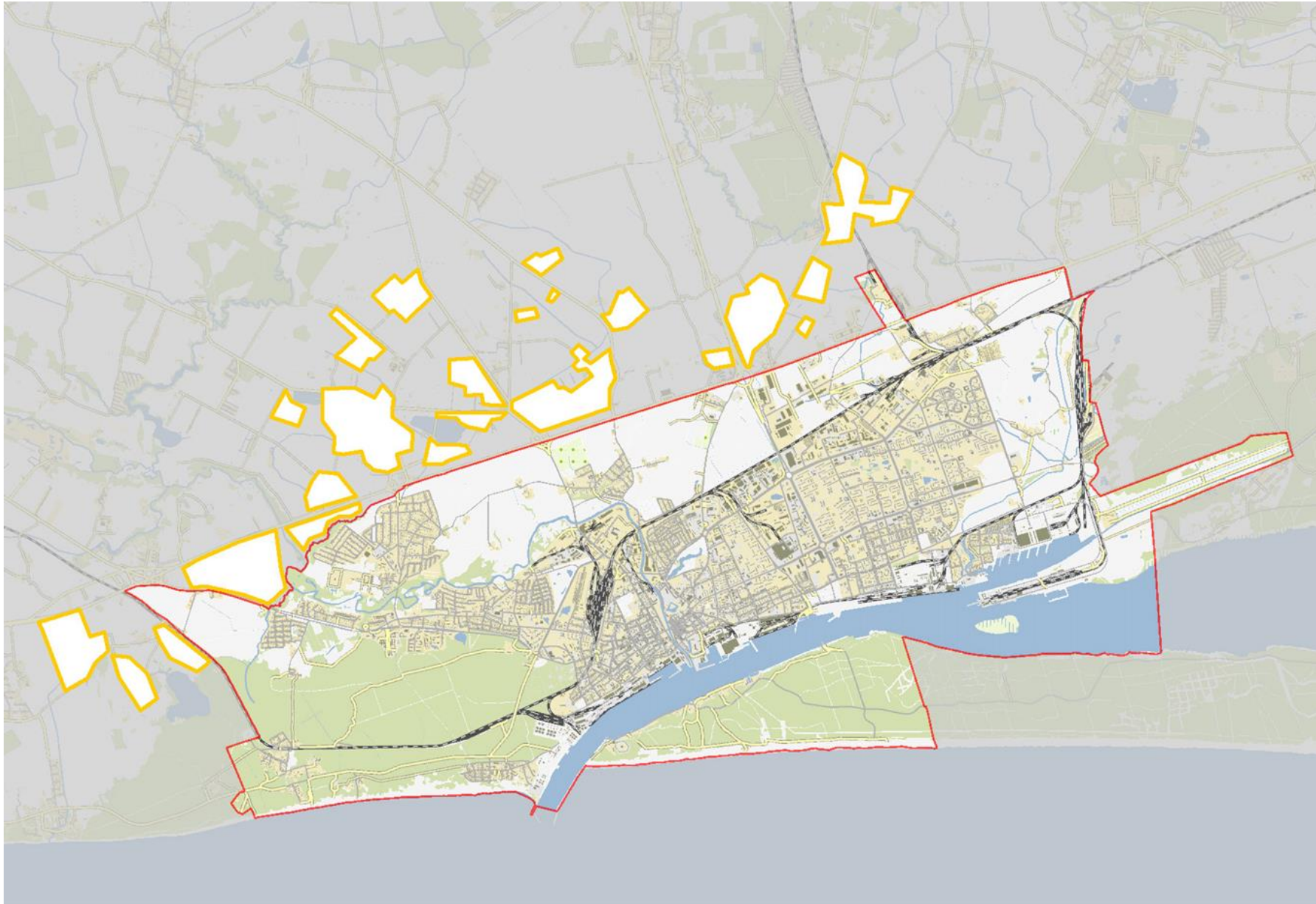
# Klaipėda City Transport System. Main problems

- City is facing depopulation;
- People are moving to live into Northern part of the City and into the suburbs;
- Traffic congestion is growing, in particular on the entrances to the city;
- There is a lack of parking spaces in the yards of apartment buildings;
- Working places are concentrated along Šilutės ave, in the city center, Klaipėda Port territory and Free Economic Zone area.

# Klaipėda City Transport System. Problems in different areas

- **Old town:** growing traffic flow has negative influence on historic buildings; this part of the city is inconvenient for pedestrians, disabled persons, young children;
- **Residential areas:** parking problems in the yards of multi-storey buildings; unattractive environment for pedestrians and cyclists – lack of lighting, worn sidewalks;
- **Areas (port, FEZ, commercial) where working places are situated:** hard to reach by public transport, by feet or cycling, most employees and customers come by individual car;
- **Suburbs:** rapid growth of new residential areas in Klaipėda district increases traffic flow in peak hours, lack of public transport, lack of social infrastructure.

# „The urban sprawl“ (2004-2018)





# Klaipėda City suburbanization process:



Part of the City	Inhabitants	Area*, ha	Density p/ha
Central	15281	207	74
Median	141540	1927	73
Periphery	19969	3061	6,5
Whole City	161200	2833	57
City+ Periphery	173620	5041	34

*\*Built-up area*



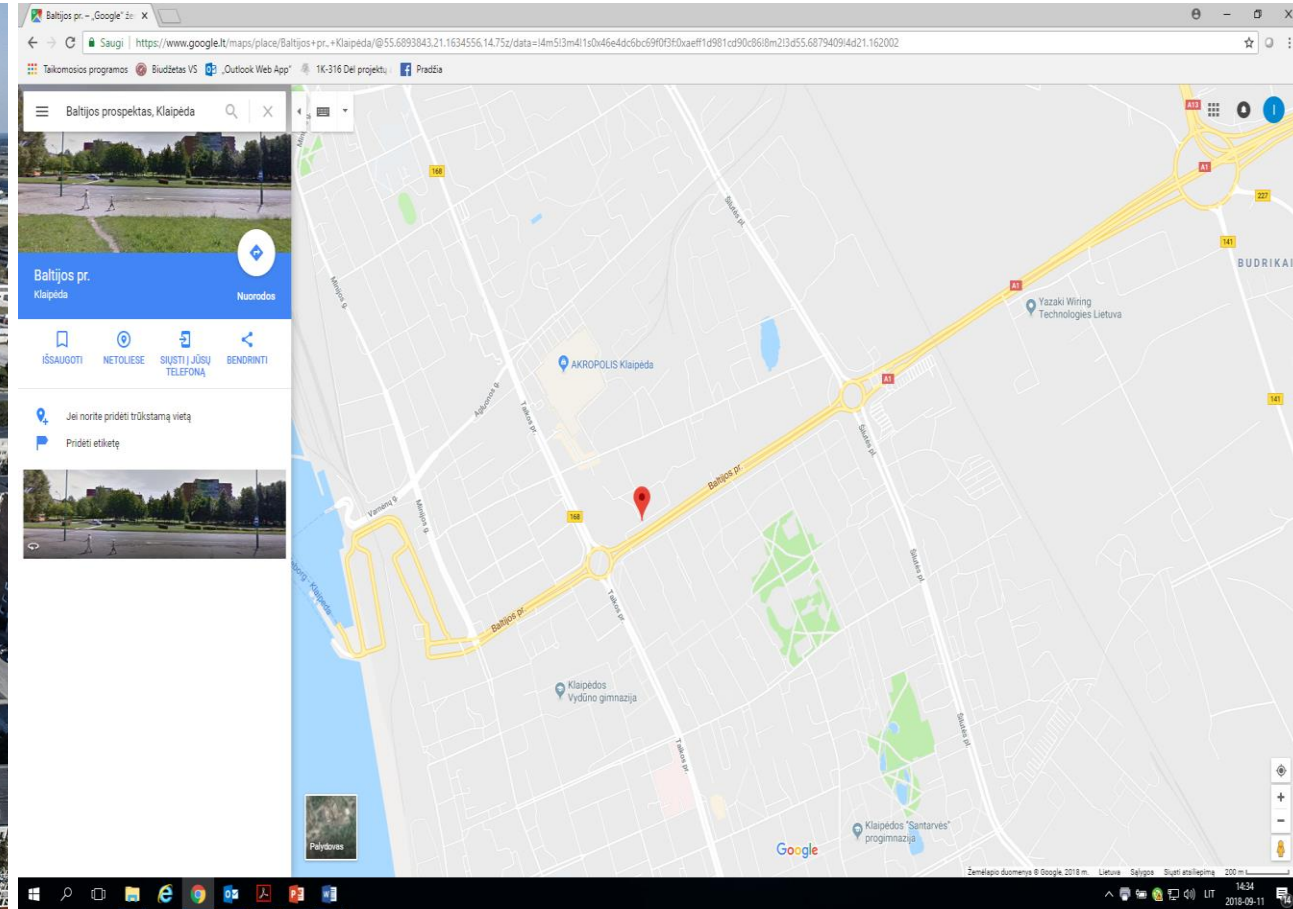


## Percentage of elderly population in Klaipėda City and periphery



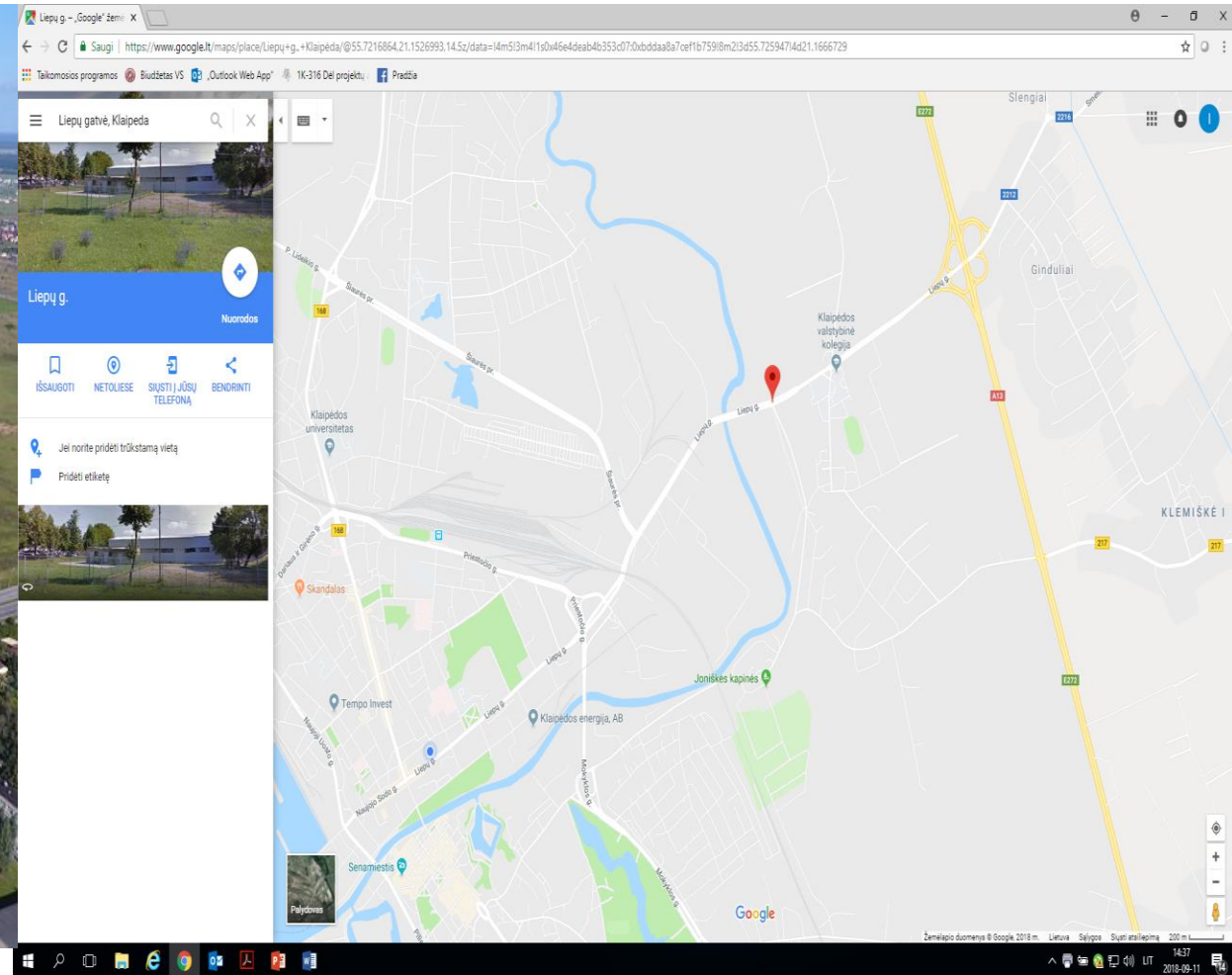


# Central entrance to Klaipeda City and Port. Baltijos blvd. and Silutes ave. junction

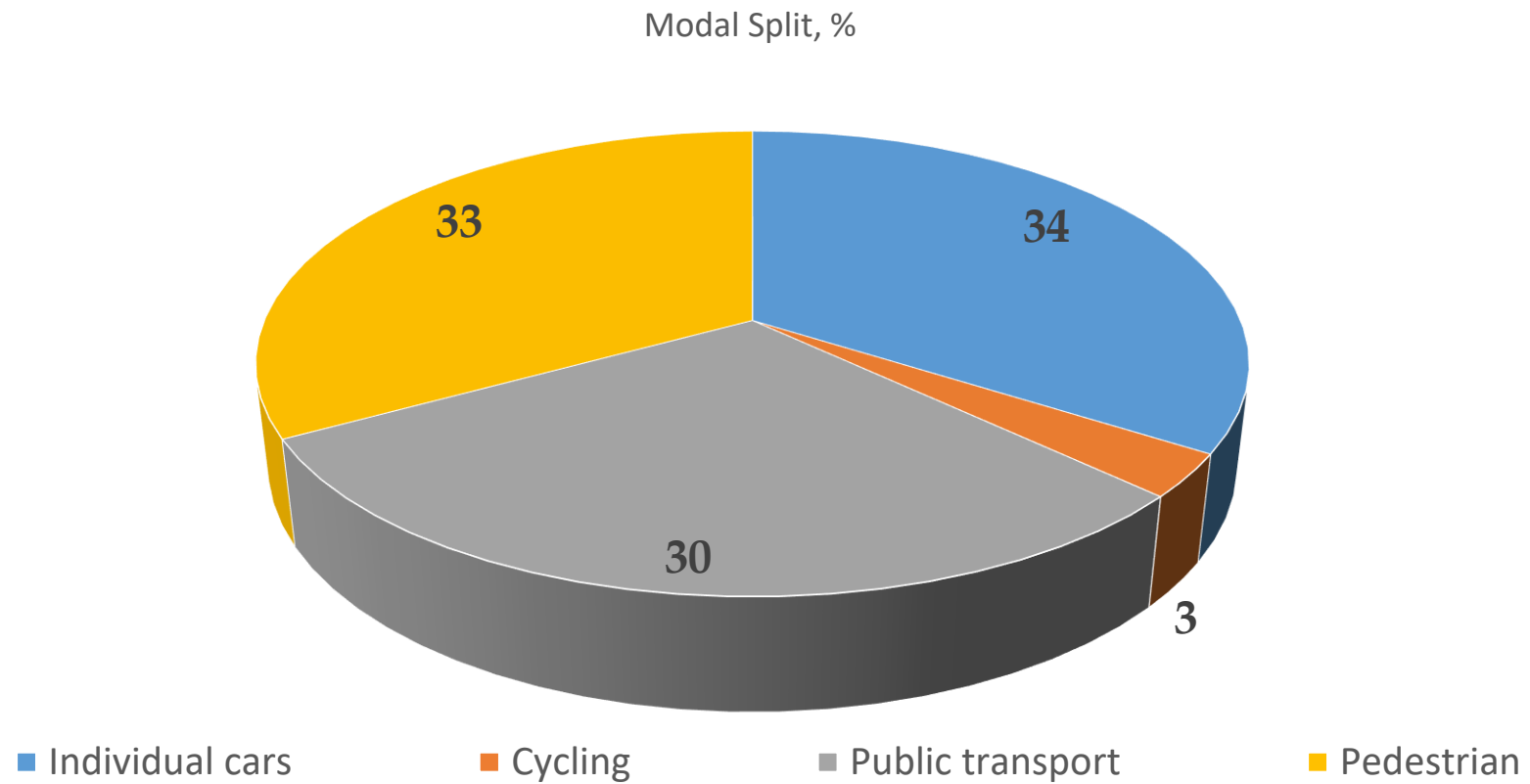




# Northern entrance to Klaipėda City and Port. Liepų street and Palanga ave. junction



# Klaipėda City Transport System. Modal split in 2017





# Steps to Sustainable Mobility

## MAIN DOCUMENTS

- Preparation of Klaipėda city traffic development study;
- Preparation of bicycle and pedestrian paths development special plan;
- Preparation of Klaipėda city sustainable mobility plan (SUMP);
- Preparation of Klaipėda city master plan;
- Participation in Civitas Portis program (by Horizons 2020 programme, PORTIS project)



# Vision of Klaipėda City Sustainable Mobility

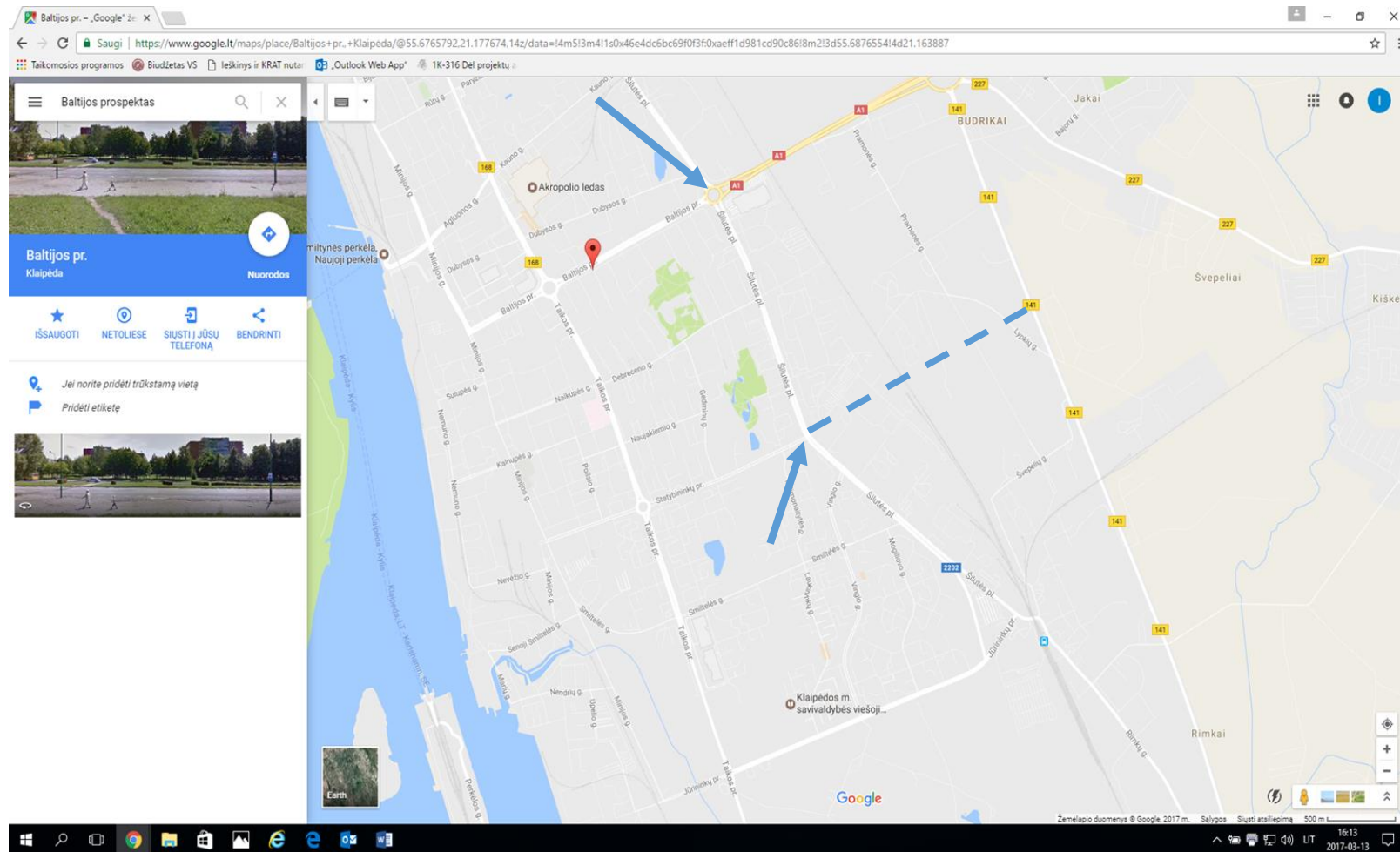
Klaipėda is a city, where residents choose walking, cycling and public transport for daily commuting.





# Steps to avoid transport congestion

- To reconstruct Baltijos blvd. – Silutes ave. junction into two level junction;
- To build a Statybininku blvd. extension from the Silutes blvd. through FEZ territory to the intersection with the 141st road;



# Steps to develop Sustainable Mobility

- Integration of Klaipėda city and neighboring municipalities public transport routes;
- Increasing the number of ecological vehicles in public transport system;
- Development of cycling paths, bike – sharing and bike storing system;
- Development of pathways
- Modernizing traffic management system by implementing ICT (prioritization of Public Transport).





**Thank you for listening!!!**